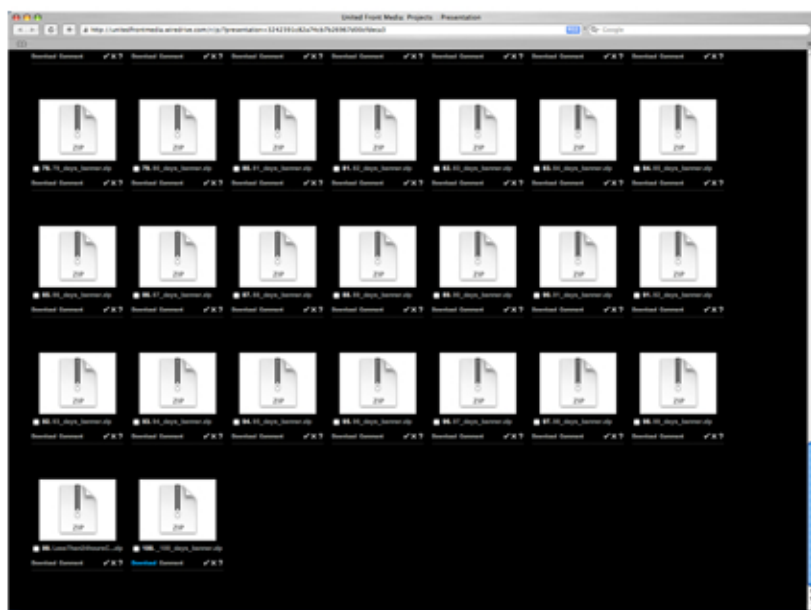


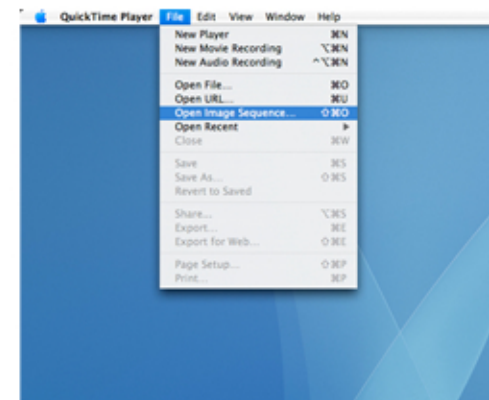
Assuming that your system supports Quick Time, please follow these simple steps In the event that you are unable to import a targa sequence directly into you video editing software of choice.



1 download file of choice

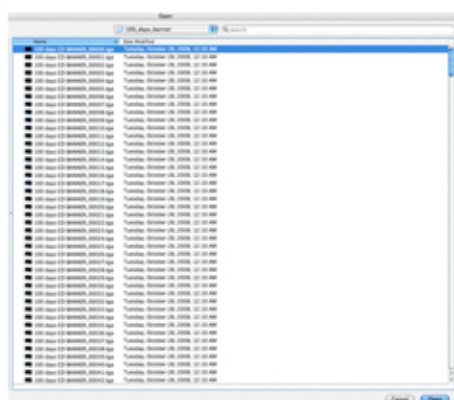


2

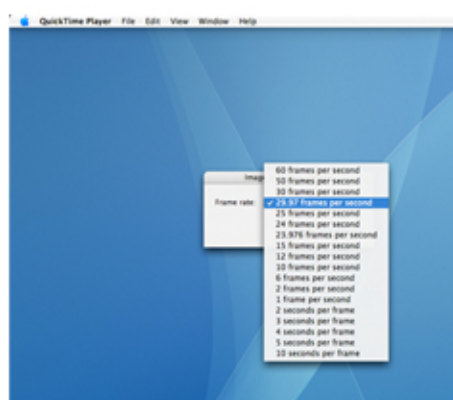


3

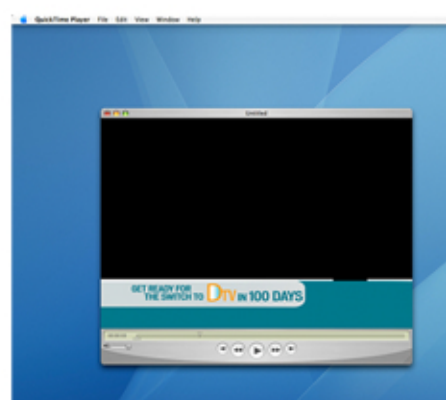
Open Targa sequence using the "Open Image sequence" command under the file menu.



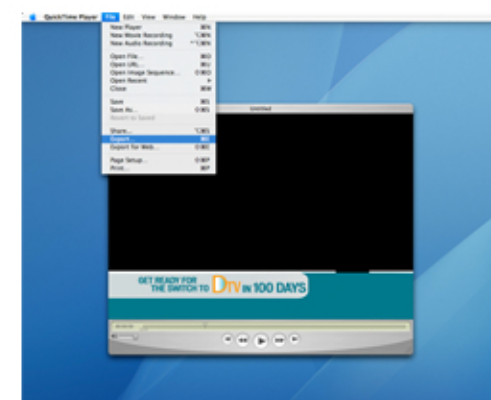
4



5



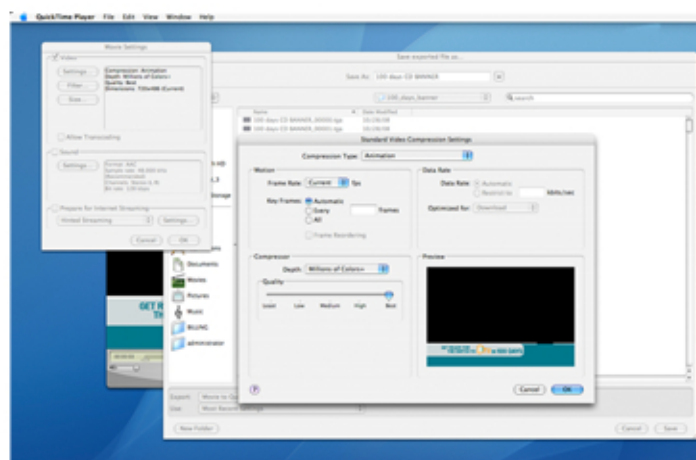
6



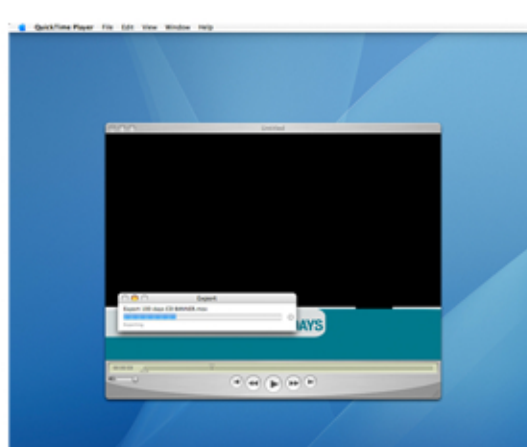
7

Load targa sequence and choose a frame rate of 29.97

Once the targa sequence is loaded, export a movie.



8



9

Remember to use a codec that supports the embedded alpha channel originally embedded in the targa sequence.